



# GMT MONTHLY MEMBERSHIP PROGRESS REPORT

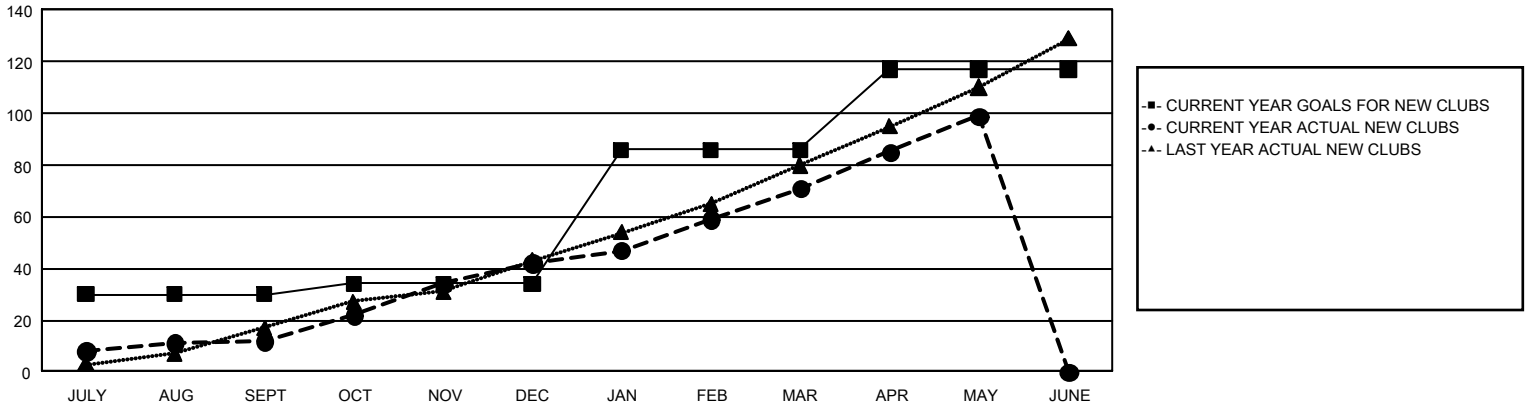
## GAT Constitutional Area 8

Results as of: 5/31/2026

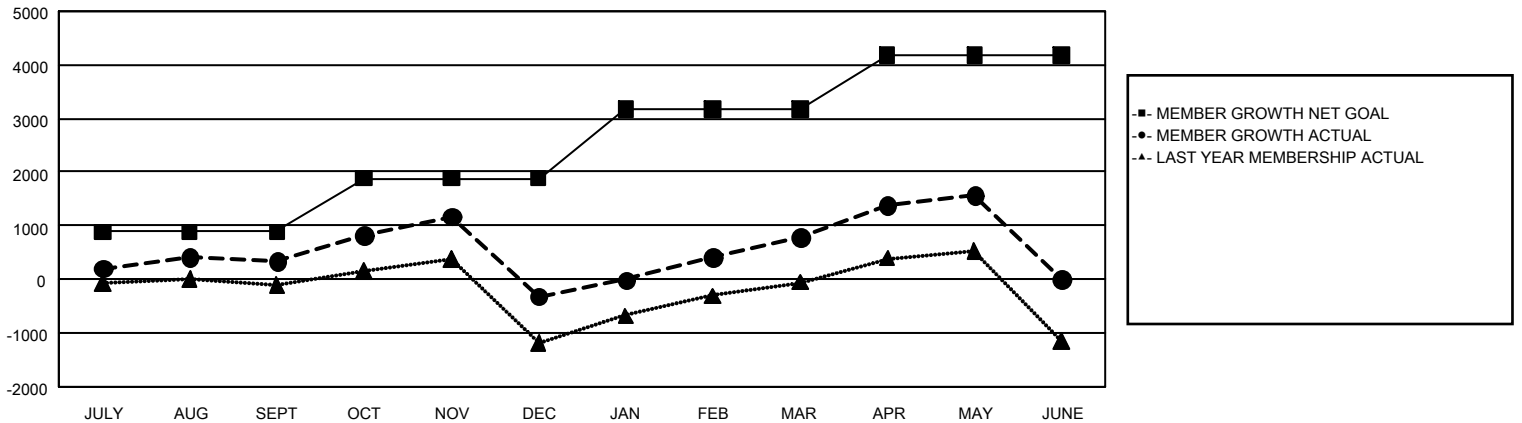
REPORT DOES NOT INCLUDE CLUBS IN UNDISTRICTED AREAS.

Clubs				Members			
RESULTS FOR 2025-2026				RESULTS FOR 2025-2026			
QUARTER	NEW CLUB GOAL	NEW CLUBS	DROPPED CLUBS	QUARTER	MEMBER GROWTH NET GOAL	MEMBER GROWTH ACTUAL	DROPPED MEMBERS ACTUAL (including transfers)
JULY/AUG/SEPT	30	12	6	JULY/AUG/SEPT	886	1,844	1,222
OCT/NOV/DEC	4	30	59	OCT/NOV/DEC	998	2,296	2,698
JAN/FEB/MAR	52	29	11	JAN/FEB/MAR	1,289	2,131	725
APR/MAY/JUNE	31	28	4	APR/MAY/JUNE	1,013	1,825	832

**GOALS AND ACTUAL NEW CLUBS CUMULATIVE**



**GOALS AND ACTUAL MEMBERS CUMULATIVE**



DROPPED CLUBS: 79	1,020 CLUBS OF 1,732 ADDED 1 OR MORE NEW MEMBERS	<b>GENDER DISTRIBUTION</b>
<b>DROPPED MEMBERS</b>		MALE                    21,971 (57.54%)
DECEASED                    131		FEMALE                    16,183 (42.38%)
CLUB CANCELLED            1,007	<a href="#">CLICK HERE FOR CUMULATIVE MEMBERSHIP DATA</a>	TOTAL FAMILY UNIT MEMBERS                    4,955
OTHER                    4,324		FAMILY MEMBERS PAYING HALF DUES                    2,921
TOTAL                    5,462		